

# BODIES OF WORK

The Chicago Festival  
of Disability Arts  
and Culture

April 20–30, 2006

[www.bodiesofwork.org](http://www.bodiesofwork.org)

312.744.6630

TTY: 312.744.2947

## Final Report



City of Chicago  
Richard M. Daley, Mayor  
Department of Cultural Affairs  
Lois Weisberg, Commissioner



Bank of America



Rehabilitation Institute of Chicago



Additional support is provided by the Department of Disability and Human Development, University of Illinois at Chicago;  
the Illinois Humanities Council; Kraft Foods; and The Neisser Family Fund.



***Bodies of Work:***  
**The Chicago Festival of Disability Arts and Culture**  
**April 20 – 30, 2006**

**FINAL REPORT**

**Table of Contents**

**History and Founders. . . . . 3**

**Consortium . . . . . 4**

**Festival Sponsors . . . . . 5**

**Accessibility and Venues . . . . . 6**

**Programming Summary . . . . . 7**

**Marketing Summary. . . . . 8**

**Publicity Summary . . . . . 9 - 12**

***TimeOut Chicago* article. . . . . 13 - 16**

**Audience Feedback Report . . . . . 17 -18**

**Partner Feedback Report . . . . . 19 - 20**

**Participant Feedback Report . . . . . 21 - 22**

**Program Evaluation . . . . . 23**

**Future Plans . . . . . 24**

Poster and brochure design by Panebianco, Inc.  
 Final Report edited by Eva Silverman  
 Final Report design by Leslie Shook

## History

The original concept for the Chicago Festival of Disability Arts and Culture developed during a meeting of disability artists, activists, professionals, and advocates in January 2003. This group quickly grew into a formal exploratory committee that named itself the Disability Arts and Cultural Consortium of Chicago (DACC). The primary goal of the DACC was to promote the recognition of disability arts as an instrument of social change outside of rehabilitation or medical contexts. Members sought out participation from the most recognized arts and culture organizations in the city in order to host a multi-day program of professional disability-based artists. In 2004, the Department of Cultural Affairs agreed to take on the responsibility of central coordination of the festival. The festival consortium was organized around four key subcommittees: fundraising, programming, access, and public relations/marketing.

## Founders

Henry Betts  
Rebecca Brashler  
Kristine Cichowski  
Sarah Crane  
Mike Ervin  
Les Friedman  
Sandra Gaynor  
Carol Gill  
Kristi Kirschner  
Ginger Lane  
Riva Lehrer  
Tekki Lomnecki

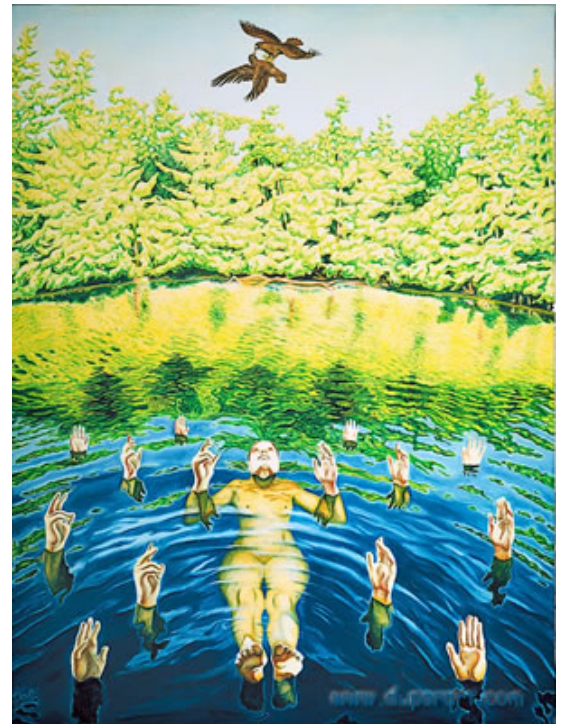
Jude Martin  
David Mitchell  
Kate Neisser  
Susan Nussbaum  
Don Olson  
Theresa Pacione  
Judith Panko-Reis  
Teresa Savage  
Sharon Snyder  
Terri Thrower  
Alana Wallace

## Festival Consortium

*Bodies of Work* was presented by a consortium of more than 50 Chicago-area cultural, academic, health-care and social service organizations.

Access Living  
After School Matters  
Aldo Castillo Arts Foundation  
Art for Life  
Art Institute of Chicago  
ArtsConnect  
Arts of Life  
The Awakenings Project  
Beverly Arts Center  
Beyond Media Education  
Brace Yourselves Productions  
Cheryl's Dreaming Big  
Chicago Department of Cultural Affairs  
Chicago History Museum  
Chicago Improv Festival  
Chicago Institute for the Moving Image  
Chicago Park District  
Chicago Public Library  
Chicago Public Schools  
Children's Brain Research Foundation  
City of Chicago Mayor's Office for People with Disabilities  
Dance>Detour  
DePaul University Merle Reskin Theatre  
Department of Disability and Human Development,  
University of Illinois at Chicago  
Duncan YMCA  
DuPage Children's Museum  
Great Lakes ADA and Accessible IT Center  
Illinois Arts Council  
International Center for Deafness and the Arts  
International Theatre of Chicago  
Jane Addams Hull House Center for Arts and Culture  
Kostas Z Foundation  
League of Chicago Theaters  
Little City Foundation  
Medical Humanities and Bioethics Program,  
Feinberg School of Medicine, Northwestern University  
Mexican Fine Arts Center Museum  
Misericordia

MOMENTA Performing Arts Company  
Museum of Contemporary Art  
Museum of Science and Industry  
Neumann Association  
Open Doors Organization  
Progress Center for Independent Living  
Rehabilitation Institute of Chicago  
School of the Art Institute of Chicago  
Schwab Rehabilitation Hospital  
Side by Side Coalition  
Snow City Arts Foundation  
Thresholds Theatre Arts  
Victory Gardens Theater  
Western DuPage Special Recreation Association



"Courtship" by Susan Dupor

## Festival Sponsors

*Bodies of Work* was made possible through the generous cash and in-kind support of dozens of foundations, corporations, government agencies, organizations and individuals.

Major support for *Bodies of Work* was generously provided by The Chicago Community Trust; Bank of America, the Rehabilitation Institute of Chicago (RIC); the Donnelley Family Ethics Program of RIC; and the Illinois Arts Council, a state agency.

Additional support was provided by the Department of Disability and Human Development, University of Illinois at Chicago; the Illinois Humanities Council; and Kraft Foods.

Additional contributors included The Active Aging Center, Rehabilitation Institute of Chicago, Dr. Santiago Toledo, Director; The Amputee Program, Rehabilitation Institute of Chicago, Dr. Todd A. Kuiken, Director; Dr. Michael and Ms. Leslie Berkowitz; Dr. Richard L. and Ms. Marily Bubula Harvey; Greg Cameron; Dr. Kristi Kirschner and Dr. Raymond Curry, in memory of Robert Edwin Kirschner; Dr. Christina Marciniak; Dr. Stacy and Mr. Adam McCarty; Kitty and Bill Moeller; The Neisser Family; Dr. Melanie Rak; Dr. Elliot J. and Ms. Renee C. Roth; and Gregory Thompson.



## Accessibility

All *Bodies of Work* venues were subject to an extensive accessibility review by the Great Lakes ADA and Accessible IT Center. All venues were wheelchair accessible with accessible restrooms. Accommodations such as sign language interpretation, audio description, captioning, Braille labels and large print programs were available at most programs.

## Venues

*Bodies of Work* programs were held at 23 Chicago-area venues throughout the city and in the suburbs, including museums, cultural centers, park district facilities, libraries, hospitals, churches, educational institutions, retailers and other venues.

The Art Institute of Chicago, 111 S. Michigan Ave., Chicago

Arts of Life, 2110 W. Grand Ave., Chicago

Aurora Public Art Commission, 20 E. Downer Pl., Aurora

Beverly Arts Center, 2407 W. 111<sup>th</sup> St., Chicago

Bloomington Park District Museum, 108 S. Bloomington Rd., Bloomington

Chicago Cultural Center, 78 E. Washington St., Chicago

Duncan YMCA Chernin Center for the Arts, 1001 W. Roosevelt Rd., Chicago

DuPage Children's Museum, 301 N. Washington St., Naperville

Gallery 37 Center for the Arts, 66 E. Randolph St., Chicago

Gene Siskel Film Center, 164 N. State St., Chicago

Hinsdale Public Library, 20 E. Maple, Hinsdale

Jane Addams Hull House, Center for Arts and Culture

1136 W. Wilson Ave., Chicago

LaSalle Bank, 135 S. LaSalle St., Chicago

Museum of Contemporary Art, 220 E. Chicago Ave., Chicago

Museum of Science and Industry, 57<sup>th</sup> Street and Lake Shore Drive, Chicago

National Vietnam Veterans Art Museum, 1801 S. Indiana Ave., Chicago

Rehabilitation Institute of Chicago, LIFE Center, 345 E. Superior St., Chicago

Schwab Rehabilitation Hospital, 1401 S. California Blvd., Chicago

South Shore Cultural Center, 7059 S. South Shore Dr., Chicago

St. Andrew's Greek Orthodox Church, 5649 N. Sheridan Rd., Chicago

University of Illinois at Chicago, 1640 W. Roosevelt Rd., Chicago

Victory Gardens Theater, 2257 N. Lincoln Ave., Chicago

Whole Foods Market, 1640 Chicago Ave., Evanston

## Programming Summary

*Bodies of Work* included approximately 60 distinct programs, many of which were presented on multiple dates, including:

- A successful **Opening Celebration**, attended by more than 300 people. The opening included a collaborative, multi-media performance created by Alana Wallace and Tekki Lomnicki specifically for the festival and an appearance by San Francisco-based performer David Roche.
- Nineteen **exhibitions** featuring work by professional artists addressing issues of disability, as well as work by amateur artists with disabilities created as part of community-based programs.
- Twelve **performing arts programs**, including theater, dance, poetry, comedy and more. Programs featured local performers as well as nationally and internationally-known performers such as Lynn Manning (Los Angeles), Mat Fraser (UK), Bill Shannon (New York) and Terry Galloway (Austin, TX).
- Ten **presentations, discussions and conversations** on topics including the language of disability, disability culture, universal design and the visual representation of people with disabilities.
- The screening of more than 25 **films**, including features, documentaries, animation and experimental works by filmmakers from Chicago, the United States and numerous countries including South Korea, Belgium, France, Australia and the United Kingdom.
- Six **workshops**, including pottery, storytelling, writing, drumming and use of the Arts for All adaptive tools.
- Several family-oriented programs, including the Young People's Festival of Disability Arts and Culture.

## Marketing Summary

The *Bodies of Work* marketing effort aimed to raise public awareness about the field of disability arts and the diversity of artists with disabilities working in Chicago and around the world and to drive attendance to exhibitions, performances and programs presented by the festival.

Target audiences included members of the disability community and general arts audiences. Capitalizing on the collaborative nature of the festival, a layered marketing campaign was created to provide participating partners with tools to promote the festival to their existing audiences and constituents (i.e., festival logo and posters; boilerplates for press releases, email blurbs, etc.).

### Printed Publications

- 30,000 copies of the 24-page brochure listing the full schedule of *Bodies of Work* events. Distributed at program partner venues, community centers, universities, Chicago Public Libraries, Chicago Park District facilities, Chicago Office of Tourism Visitor Information Centers and locations throughout Chicago
- Festival posters displayed at program partner venues
- Opening event postcard invitation distributed via partner organizations

### Web site and Email

- Full schedule of *Bodies of Work* programs posted on the festival Web site at [www.bodiesofwork.org](http://www.bodiesofwork.org)
- Creation of a dedicated email list and frequent email blasts

### Public Relations

- Contracted with The Silverman Group, local public relations firm specializing in performing arts and entertainment
- Press releases and pitches to local and national print and electronic media

### Partner Marketing

- Most festival partners participated in the festival marketing by creating postcards, web content, brochures, performances programs, press materials and print advertising to support their specific programs while also referencing the festival by including the festival logo, Web site and boilerplate.



## Publicity Summary

### DATE/MEDIA OUTLET/COVERAGE

2/19/2006 WLS-TV Karen Meyer segment with Dance>Detour, plus interviews with Alana Wallace, Ginger Lane and Mike Ervin

2/22/2006 INSIDE PUBLICATIONS Item about Victory Gardens Theater's participation in festival mentions *Bodies of Work*

3/10/2006 CHICAGO SUN-TIMES Festival announcement plus interview with Eva Silverman

3/16/2006 CLTV Feature on Beverly neighborhood mentions festival in general (airs multiple times per day for 4 days)

3/26/2006 WLS-TV Bill Campbell feature on Neumann Association mural project mentions festival in general

3/31/2006 CHICAGO SUN-TIMES Humans Being feature plus sidebar on festival in general

4/1/2006 CHICAGO MAGAZINE Festival listing

4/1/2006 NORTH SHORE MAGAZINE Festival listing

4/1/2006 TODAY'S CHICAGO WOMAN Festival mention in "Woman About Town"

4/1/2006 CHICAGO SOCIAL Festival calendar mention

4/1/2006 WHERE MAGAZINE "Here Now" featurette with color photo plus photo in table of contents

4/1/2006 FRONT DESK Festival listing plus photo

4/1/2006 AMERICAN THEATRE Festival featurette plus large photo

4/1/2006 CONSCIOUS CHOICE Festival listed as a "Choice Event"

4/1/2006 CHICAGO SOCIAL MEN'S BOOK Festival listing

4/13/2006 **-NEED PUBLICATION** Festival feature plus interview with David Mitchell

## Publicity Summary (continued)

4/14/2006 CHICAGO TRIBUNE "On The Town" front page teaser plus feature, including interviews with Riva Lehrer, Bill Shannon, Alana Wallace, and 2 photographs

4/14/2006 CHICAGO READER Section 2 front page teaser plus full page of festival listings with photo

4/14/2006 PERFORMINK Front page festival feature plus Mat Fraser photograph

4/16/2006 CHICAGO TRIBUNE Sunday feature on audio description, including interviews with Joel Snyder and Mike Ervin, plus 2 photos

4/16/2006 CHICAGO SUN-TIMES Kristi Kirschner opinion piece mentions festival

4/16/2006 WGN-AM David Mitchell interview with Rick Kogan

4/17/2006 DAILY SOUTHTOWN Life section front page feature, including interviews with RIC, Alana Wallace and Mat Fraser, plus 4 photos

4/18/2006 MEDILL NEWS SERVICE Festival feature with interviews of Alana Wallace, Tekki Lomnicki and David Mitchell

4/19/2006 PIONEER PRESS Festival feature with interview and large photo of Riva Lehrer

4/19/2006 PIONEER PRESS Feature on 3 local artists involved in festival: Terry Karpowicz, Alana Wallace and Mike Ervin, plus photographs of all 3

4/19/2006 INSIDE PUBLICATIONS Front page festival feature plus Mat Fraser photograph

4/19/2006 GREAT DOINGS EMAILER Festival item

4/20/2006 TIME OUT CHICAGO Bill Shannon photo in table of contents; 4-page photo essay with Alana Wallace, Tekki Lomnicki, Bill Shannon and Riva Lehrer; "Around Town" listings plus photo; Kids section listings plus photo; Bill Shannon feature plus photo in Dance section; Mat Fraser interview plus photo in Theater section, Film section listings

4/20/2006 CHICAGO SUN-TIMES Art Institute feature on "Tactiles" mentions *Bodies of Work* festival

## Publicity Summary (continued)

4/21/2006 WLS-TV Festival feature on the Thresholds Art Project, plus other festival events in general

4/21/2006 CHICAGO READER Section 2 front page teaser plus 2 other teasers in "The List," plus full page of festival listings and Lynn Manning Critic's Choice with photo

4/21/2006 DAILY HERALD Festival listed as a "Best Bet" plus color Bill Shannon photo

4/21/2006 DESTINATION CHICAGO RADIO SHOW Taped interview with Tekki Lomnicki features the festival/opening celebration

4/21/06 - 4/30/06 CHICAGO WORKS Includes interviews with Alana Wallace and Riva Lehrer, plus footage of a number of different events and exhibits, including the Opening Celebration

4/21/06 - 4/30/06 WYCC-TV Interviews with Riva Lehrer and David Mitchell, plus footage of Humans Being and the Disability History exhibit at UIC

4/21/06 - 4/30/06 CHANNEL 25 Footage of various events taking place during the festival

4/21/2006 SALSACHICAGO.COM, LA RAZA Festival Opening Night feature

4/23/2006 WLS-TV Festival feature on the Abstract Mind Mural at the Museum of Science and Industry

4/24/2006 AURORA BEACON NEWS "Awakenings" feature

4/24/2006 WBBM-TV SPECIAL REPORT Jim Mullen feature on festival

4/26/2006 LEAGUE OF CHICAGO THEATERS EMAILER Festival information included

4/27/2006 NEW CITY Bill Shannon item plus photo

4/27/2006 TIME OUT CHICAGO Kid listings, "Don't Miss" item, Art & Design column on Museum of Science and Industry display plus photo, film festival listings, comedy listings

## Publicity Summary (continued)

4/27/2006 NAPERVILLE SUN Festival feature with focus on DuPage Children's Museum

4/28/2006 CHICAGO READER Section 2 front page tease plus full page of festival listings with photo

4/28/2006 DAILY HERALD Festival listings

4/28/2006 CHICAGO SUN-TIMES Film Festival item in "The List"

4/28/2006 WBEZ RADIO Ed Lifson essay on festival

**Need info TBD (late interview)** NEW MOBILITY Feature on festival including interview with David Mitchell

Ongoing [www.chitowndailynews.org](http://www.chitowndailynews.org) Festival feature including interviews with Alana Wallace, Tekki Lomnicki and David Mitchell

Ongoing [www.gapersblock.com](http://www.gapersblock.com) Festival item

Ongoing [www.wfmt.com](http://www.wfmt.com) Festival event listing

Ongoing [www.wdrv.com](http://www.wdrv.com) Festival event listing

Ongoing [www.metromix.com](http://www.metromix.com) Festival event listings

Ongoing [www.877chicago.com](http://www.877chicago.com) Festival event listings

Ongoing [www.sixnewthings.com](http://www.sixnewthings.com) Festival event listings

Ongoing [www.salsachicago.com](http://www.salsachicago.com) Festival feature

Ongoing [www.centerstagechicago.com](http://www.centerstagechicago.com) Festival item

Ongoing [www.theatermania.com](http://www.theatermania.com) Festival event listing

Ongoing [www.360mag.com](http://www.360mag.com) Festival feature

The following article appeared in *TimeOut Chicago* magazine in April, 2007. (reprinted by permission)



# Body art

Chicago is a major center of "crip culture," as it's referred to by its participants, so it seems appropriate that our city is hosting a ground-breaking cross-genre celebration of disability arts and culture. The inaugural Bodies of Work festival, taking place April 20–30, includes offerings from hundreds of artists and venues. Here, we feature a few of this year's most noteworthy performers—see *Around Town*, *Art & Design*, *Dance*, *Kids and Theater* for additional coverage and listings. For more info and a complete schedule, visit [www.bodiesofwork.org](http://www.bodiesofwork.org).

By **Ruth Weite** Photographs by **Katrina Wittkamp**

## Alana Wallace

**WALLACE IS THE FOUNDER AND ARTISTIC** director of Dance>Detour, a professional dance company that includes performers with and without disabilities. Wallace uses a wheelchair as a result of childhood polio, and incorporates the chair into her pieces. Wallace and the rest of Dance>Detour will perform in the Bodies of Work opening-night production.

**How do you describe what you do to people who can't picture a person dancing in a wheelchair?**

It's hard; I can spout off some elaborate definition, but it's easier to just say that the wheelchair can be a beautiful accessory to the dancers. The movement is like ice dancing, the way skaters glide across the ice. But of course, the best way to "get it" is to see it.

**What's the most outrageous thing anyone's said to you about your disability?**

One time, people were talking about what they would wish for if they could wish for anything, and someone jumped in and spoke for me. They said, "You'd wish your disability away." And that is not the case, that's not what I'd wish for—though of course you can imagine why someone would assume that.

**Opening Celebration:** Thu 20, 6:30–8pm, Preston Bradley Hall, Chicago Cultural Center, 78 E Washington St, 312-742-4716, TTY: 312-744-2947, Free, reservations required. **Bodies that Dance:** See *Dance*, Fri 21, Sat 22. **Young People's Festival of Disability Arts and Culture:** Apr 29, 10am–5pm, St. Andrew's Greek Orthodox Church, 5649 N Sheridan Rd, 773-388-8839, [www.opendoorsnfp.org](http://www.opendoorsnfp.org), Free.



## Bill Shannon

**SHANNON CONSIDERS HIMSELF A CONCEPTUAL** artist, not a choreographer or dancer. And yet his work incorporates urban freestyle dance, and he's invented a school of movement he calls Shannon Technique, which draws from street-dance and skater culture. Shannon performs on crutches (which he's used since he was five) and often on a skateboard. He holds a B.F.A. from the Art Institute of Chicago, and lives in Brooklyn.

In the piece *Traffic*, which he will perform on three consecutive nights, Shannon wheels through downtown Chicago on a skateboard, propelling himself with custom-designed crutches. The audience follows him in a souped-up CTA bus that's outfitted with cameras and a sound system. A DJ spins on the bus, and Shannon wears a microphone, so bus riders can listen to what he hears and says.

### What is your work about?

The cultural connotation of skating is "taking big risks and jumping on things and falling down and getting scabs." The cultural connotation of crutches is "Oh, too bad you can't dance. I hope you make it up the stairs—be careful." With my work, it's about mixing that up.

### Why a city bus?

I was really happy to see the CTA has made their buses accessible to wheelchairs. Part of my audience is a wheelchair audience, and getting a person in a wheelchair onto a regular tour bus is really hard.

**Traffic: Wed 26–Fri 28, 6pm. Museum of Contemporary Art, 220 E Chicago Ave, 312-280-2660. \$22 (\$18 for MCA members). For more on Shannon, see Dance.**



## Riva Lehrer

**LEHRER PAINTS AND CURATES ART SHOWS** in Chicago; she's also the originator and cocurator of the "Humans Being" exhibit at the Chicago Cultural Center, a cornerstone of the larger Bodies of Work festival that features pieces from 32 artists, including graphic novels and digitally manipulated photos. Lehrer's own body of work includes portraits of disabled artists, including self-portraits. The show includes one piece by Lehrer (*Edgewater Beach*, shown here).

### **What is *Edgewater Beach* about?**

Most of my work, I don't have a hard time talking about, but with this one, I do. I have spina bixida, and in some ways I'm much more mobile than many people who have it, and I've escaped many of its predations. At the same time, I've had 43 surgeries. If I'm living as if everything's fine, something happens to remind me that it's not. If I live as if I'm not capable of doing very much, well, that's not the truth, either. I have to make almost constant choices about what's the dominant reality in my life just then.

### **What are some of the challenges faced by artists who focus on disability?**

Almost none of the galleries here in Chicago are accessible. I've got a lot of people who I'd like to show in these galleries, and I can't get them into the building. They're literally being shut out. And so people will say, "Nobody's doing work about that."

**"Humans Being: Disability in Contemporary Art":  
Through Jun 4, Michigan Avenue Galleries, Chicago  
Cultural Center, 75 E Washington St, 312-742-4716,  
TTY: 312-744-2947. Free.**





## Tekki Lomnicki

**LOMNICKI IS AN ACTRESS, PLAYWRIGHT,** and the cofounder of Tellin' Tales Theatre, which organizes storytelling workshops for adults and kids with and without disabilities. Lomnicki co-wrote and is directing the Bodies of Work opening-night performance.

**How has directing the opening-night show been a challenge?**

Even though I personally have a disability, and I think I'm so politically correct, I had to be sensitive to other types of disabilities. For instance, at one point, I was talking to a performer, a deaf comedian, when she had her back turned to me. But she was patient. That's like me—I'm a little person, and I get the same questions over and over. And I just have to say the answers over and over and not bite a person's head off. They're just asking questions that occur to everybody.... One of the most outrageous questions I've gotten is "Do you have sex?"

**What other projects are you involved with during the festival?**

I'm doing a solo comedy show as Second City's offering in the festival, and I'm also performing for a gigantic group of kids on the last Saturday of the fest. My piece for the kids is called *The MWord*, because people end up using the word midget when referring to us, and we hate that word.

**Opening Celebration:** See page 20. **Blurred Vision: The Relapse** (Lomnicki's solo comedy show): **Tue 25, Wed 26, 8pm.** **Second City e.t.c.,** 1608 N Wells St, 312-337-3992. **515. Young People's Festival of Disability Arts and Culture:** See page 20.



## Audience Feedback Report

*Bodies of Work* partner organizations were asked to distribute this survey to audiences at their programs.

Today's date \_\_\_\_\_

Name of program or exhibition  
\_\_\_\_\_

### How did you hear about it?

- brochure or flyer  website  
 newspaper or magazine  
 radio or TV  email  
 word of mouth  
 other \_\_\_\_\_

Where do you live?

city \_\_\_\_\_ zip \_\_\_\_\_

email \_\_\_\_\_

How would you rate the overall performance or exhibition?

- excellent  good  fair  poor

To what extent did this program change your ideas about disability?

- a great deal  somewhat  
 little to none

Were the disability-related accommodations adequate?

- yes  no If not, explain.

Please indicate if you are a person

- with a disability  without a disability

Please include additional comments on back.

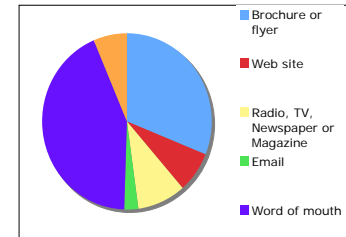
Survey is also available at [www.bodiesofwork.org](http://www.bodiesofwork.org).

## Audience Feedback Report (continued)

451 surveys were returned and results are as follows:

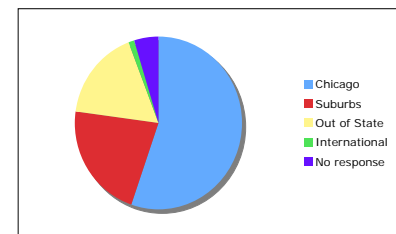
### *How did you hear about it?*

Brochure or flyer: 34%  
 Web site: 8%  
 Radio, TV, Newspaper or Magazine: 10%  
 Email: 3%  
 Word of mouth: 47%  
 No response: 7%



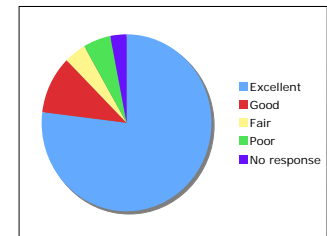
### *Where are you from?*

Chicago: 58%  
 Suburbs: 23%  
 Out of State: 18%  
 International: 1%  
 No response: 5%



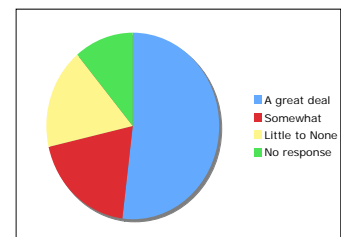
### *How would you rate the program?*

Excellent: 74%  
 Good: 10%  
 Fair: 4%  
 Poor: 5%  
 No response: 3%



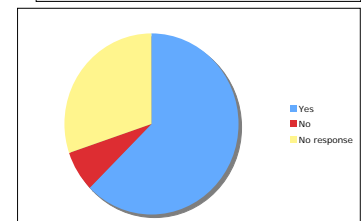
### *Did the program change your ideas about disability?*

A great deal: 51%  
 Somewhat: 19%  
 Little to None: 17%  
 No response: 11%



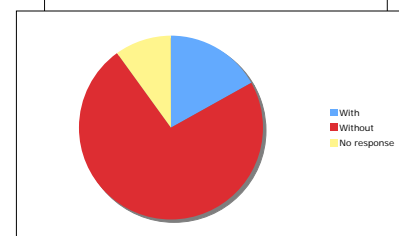
### *Were the accommodations adequate?*

Yes: 62%  
 No: 7%  
 No response: 30%



### *Are you a person with a disability or without?*

With: 17%  
 Without: 74%  
 No response: 10%



# Partner Evaluation

Bodies of Work Consortium members were asked to complete the following partner evaluation.

Name: \_\_\_\_\_

Phone: \_\_\_\_\_ Email: \_\_\_\_\_

Organization(s): \_\_\_\_\_

Name of Event (s): \_\_\_\_\_ Date(s): \_\_\_\_\_

Event Venue: \_\_\_\_\_

## Bodies of Work – Overall Evaluation

Please mark "X" in the column indicating your response. Feel free to add additional comments.

1. Please evaluate Bodies of Work's success in accomplishing its goals:

	Poor	Satisfactory	Very Good	N/A
• Featured the creative diversity of local, national, and international disability cultural communities				
• Used art and culture to advance public attitudes toward disability				
• Provided alternative perspectives that broaden and de-medicalize our expressive traditions about human bodies				
• Encouraged discussion and understanding of the historical and cultural context of disabilities and the arts through interdisciplinary panel discussions and symposia				
• Created opportunities for participation of children and youth.				
• Placed artists in residencies and partnerships with various programs in the city.				

2. Please evaluate the other aspects of Bodies of Work:

	Poor	Satisfactory	Very Good	N/A
• Quality of promotional materials: posters, brochures etc.				
• PR and Marketing				
• Organization				
• Communication with program partners				
• Assistance with accessibility and accommodations				

3. What aspect of this experience was the most valuable to you?

	Not Important	Important	Very Important
• Increased visibility			
• Developing new partnerships			
• Promotional assistance			
• Opportunity to participate in a worthwhile program			
• Learning about methods of making programs accessible to people with disabilities			
• Developing new audiences with disabilities			
• Other			

## Partner Evaluation (continued)

4. Please rate your particular Bodies of Work program(s) according to these criteria:

<b>PROGRAM #1</b>	<b>Poor</b>	<b>Satisfactory</b>	<b>Very Good</b>	<b>N/A</b>
• Attendance				
• Audience appreciation				

• Estimated total attendance # \_\_\_\_\_ Estimated new audience % \_\_\_\_\_

<b>PROGRAM #2</b>	<b>Poor</b>	<b>Satisfactory</b>	<b>Very Good</b>	<b>N/A</b>
• Attendance				
• Audience appreciation				

• Estimated total attendance # \_\_\_\_\_ Estimated new audience % \_\_\_\_\_

<b>PROGRAM #3</b>	<b>Poor</b>	<b>Satisfactory</b>	<b>Very Good</b>	<b>N/A</b>
• Attendance				
• Audience appreciation				

• Estimated total attendance # \_\_\_\_\_ Estimated new audience % \_\_\_\_\_

<b>PROGRAM #4</b>	<b>Poor</b>	<b>Satisfactory</b>	<b>Very Good</b>	<b>N/A</b>
• Attendance				
• Audience appreciation				

• Estimated total attendance # \_\_\_\_\_ Estimated new audience % \_\_\_\_\_

<b>PROGRAM #5</b>	<b>Poor</b>	<b>Satisfactory</b>	<b>Very Good</b>	<b>N/A</b>
• Attendance				
• Audience appreciation				

• Estimated total attendance # \_\_\_\_\_ Estimated new audience % \_\_\_\_\_

5. What changes/improvements would you like to see in future Bodies of Work programs? \_\_\_\_\_

---



---



---



---



---

6. Other comments? \_\_\_\_\_

---



---



---



---



---

Thank You!

## Participant Feedback Report

15 surveys were returned, and the results are as follows:

### **Success in accomplishing festival goals:**

*Featured creative diversity of disability cultural communities*

Poor: 0%

Satisfactory: 27%

Very good: 73%

N/A: 0%

*Advanced public attitudes toward disability*

Poor: 0%

Satisfactory: 0%

Very good: 100%

N/A: 0%

*Provided alternative perspectives*

Poor: 0%

Satisfactory: 0%

Very good: 80%

N/A: 3%

*Encouraged discussion and understanding of context*

Poor: 0%

Satisfactory: 7%

Very good: 73%

N/A: 20%

*Provided opportunities for youth*

Poor: 0%

Satisfactory: 40%

Very good: 33%

N/A: 27%

*Placed artists in residencies*

Poor: 0%

Satisfactory: 20%

Very good: 33%

N/A: 47%

## Participant Feedback Report (continued)

### Administrative aspects:

#### *Promotional Materials*

Poor: 0%  
Satisfactory: 33%  
Very good: 66%  
N/A: 0%

#### *PR and Marketing*

Poor: 7%  
Satisfactory: 40%  
Very good: 53%  
N/A: 0%

#### *Organization*

Poor: 0%  
Satisfactory: 33%  
Very good: 60%  
N/A: 7%

#### *Communication*

Poor: 0%  
Satisfactory: 13%  
Very good: 80%  
N/A: 7%

#### *Assistance with accommodations*

Poor: 0%  
Satisfactory: 13%  
Very good: 74%  
N/A: 13%

### Value of Participation:

#### *Increased visibility*

Not important: 0%  
Important: 27%  
Very important: 73%  
N/A: 0%

#### *New partnerships*

Not important: 0%  
Important: 13%  
Very important: 80%  
N/A: 7%

#### *Promotional assistance*

Not important: 13%  
Important: 47%  
Very important: 33%  
N/A: 7%

#### *Participation in a worthwhile program*

Not important: 0%  
Important: 13%  
Very important: 87%  
N/A: 0%

#### *Opportunity to learn about accessibility*

Not important: 13%  
Important: 20%  
Very important: 60%  
N/A: 7%

#### *Developing new audiences with disabilities*

Not important: 0%  
Important: 20%  
Very important: 73%  
N/A: 7%

## Program Evaluation

Partner Organizations that responded to the survey reported on attendance and audience response at 40 programs.

### *Attendance rating*

Attendance was rated as “poor” at 1 program.

Attendance was rated as “satisfactory” at 18 programs.

Attendance was rated as “very good” for 20 programs.

Attendance was unrated at 1 program.

### *Appreciation rating*

Audience appreciation was rated as “poor” at 1 program.

Audience appreciation was rated as “satisfactory” at 1 program.

Audience appreciation was rated as “very good” at 37 programs.

Audience appreciation was unrated at 1 program.

### *Attendance figures*

Attendance figures were reported for 43 programs. The total attendance for those 43 programs was 18,480.

### *New audiences*

Participating partners reported that an average of 66% of the audiences at their BOW organizations were new to their organizations.



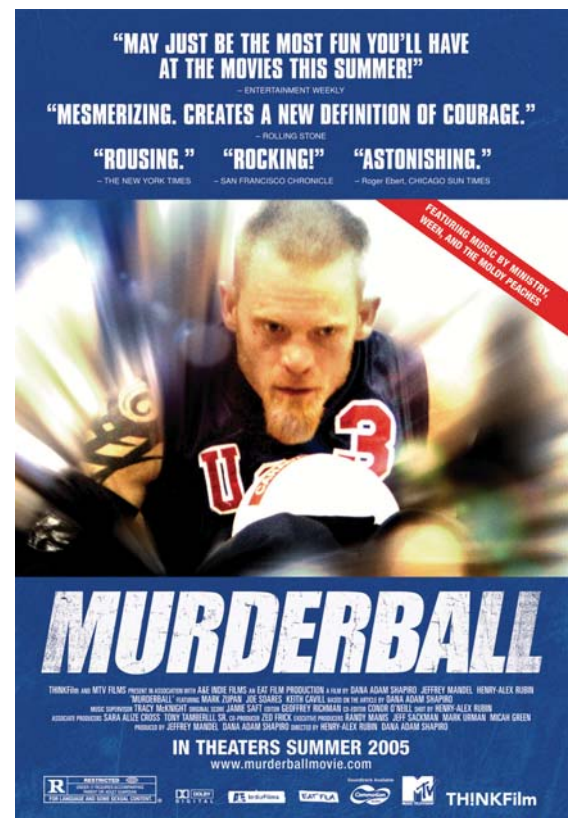
Dance>Detour

## Future Plans

Although *Bodies of Work* was only 10 days in length, the energy and interest in disability arts and culture that it generated carry on. As a result of its work to create and implement the festival, the *Bodies of Work* Consortium developed a powerful network of organizations and individuals that continues to thrive, sharing resources and information about disability arts events in Chicago and beyond. Organizations in several cities, including Philadelphia and St. Louis, have contacted the festival for information and are considering presenting similar events in their cities. Many elements of the festival, including the Disability History Exhibit, the Crip Slam and the Film Festival are continuing. Inspired by *Bodies of Work*, Access Living has chosen to implement a permanent Disability Arts and Culture Program at their new facility.

The *Bodies of Work* Consortium continues to meet, making plans for a second festival in 2009. The Consortium is working toward finding a home for the festival within a larger organization and hiring a staff person devoted to the project.

For information about joining the consortium or about *Bodies of Work*, contact Eva Silverman by telephone at 312.744.4405 (voice) or by email at [esilverman@cityofchicago.org](mailto:esilverman@cityofchicago.org) or check the Web site at [www.bodiesofwork.org](http://www.bodiesofwork.org).



Murderball Poster